



Radar Pulse Generator

Overview

- **NI PXIe Based Platform for Radar/EW Test**
 - Leverages a Variety of NI FPGAs/VSTs/Upconverters up to 44GHz
 - LabVIEW™ and LabVIEW™ FPGA Software Environment
- **Provides PDW to IQ Generation**
- **Multi-Emitter System**
 - Faster Simulation Setup
 - More Complex Scenario Testing
 - Ease of Changing Scenarios
- **Supports Multiple PDW Formats**
 - Simple, Built-In PDW Format
 - Industry Standard PDW Formats (e.g., NEWEG)
 - Custom PDW Formats
- **PDW Data Accessible via Stored Files, or Live Streaming**
- **Factory to Field Deployable**

**Rugged Transit Case -
Watertight for Shipment**

**18 Slot NI PXI/PXIe Chassis
with Embedded Controller**

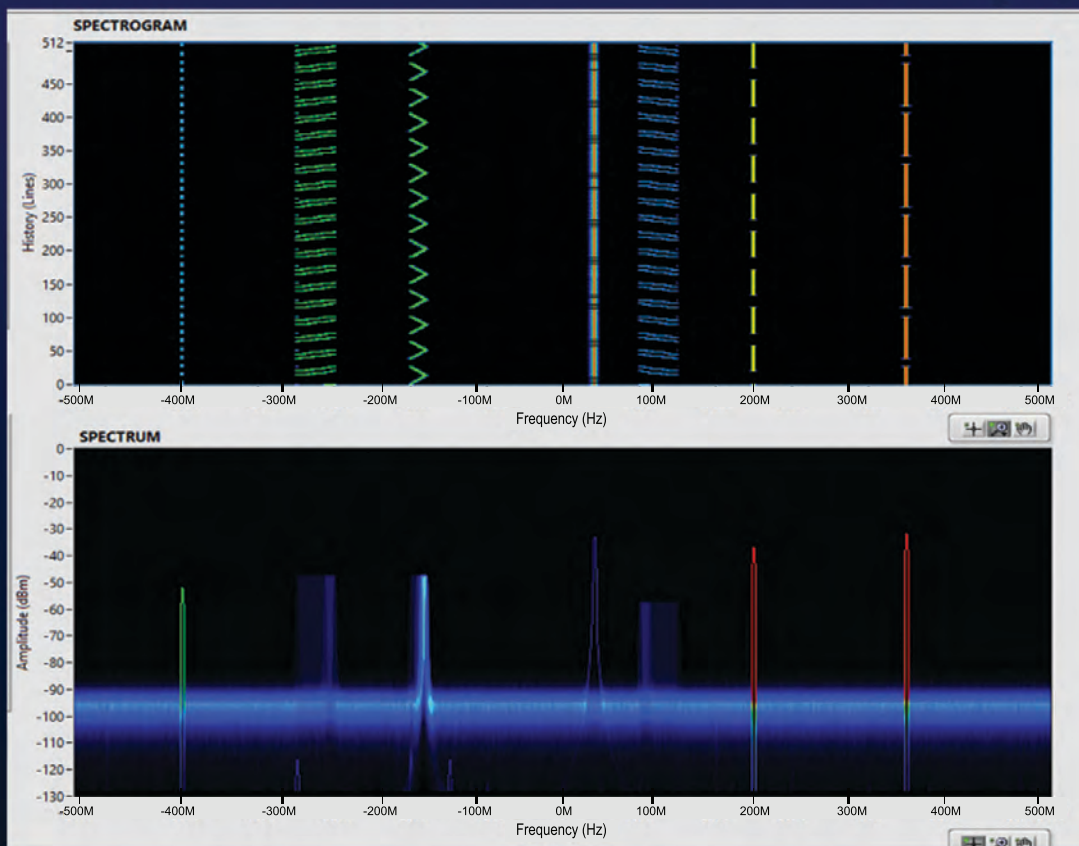
RF Transceivers (VST)

FPGA Coprocessors





Radar Pulse Generator



Features

- **1 GHz Instantaneous Bandwidth (IBW)**
- **Up to 8 Time-Concurrent Channels (i.e., IQ Streams) per FPGA/Signal Generator**
 - Independent Pulse Width and Interval on each Emitter
- **Wide Variety of Waveform Types**
 - Pulsed CW, Non-pulsed CW, LFM, BPSK, QPSK, ASK, QAM

